



**EVOTECH**®  
P E R F O R M A N C E

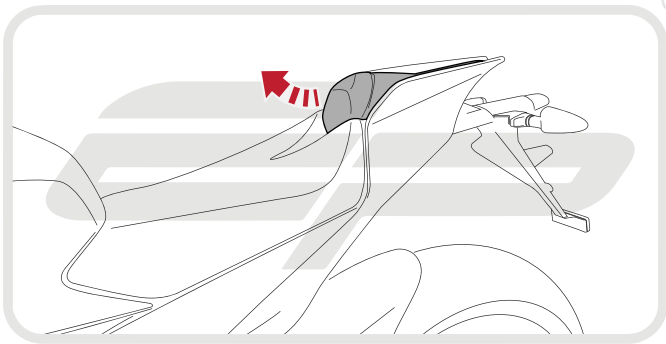
## Installation Instructions

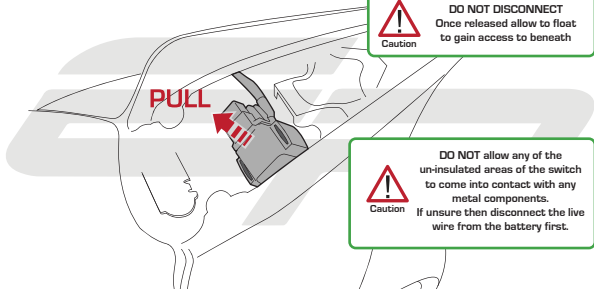
## APRILIA RSV4 RF 2015 TAIL TIDY

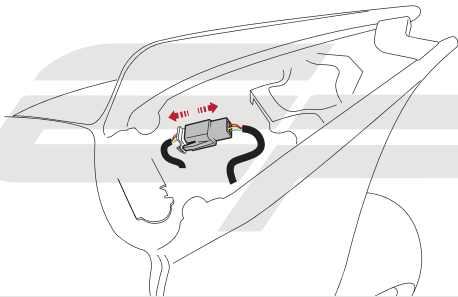
**Product Reference - 12584**

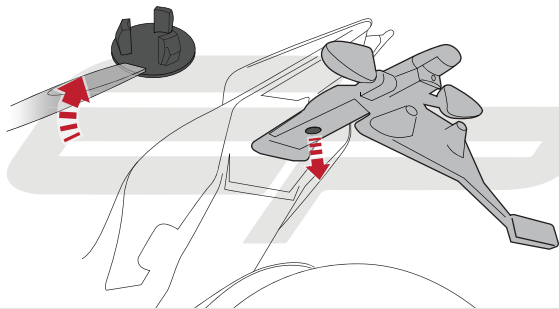
### Kit Contents

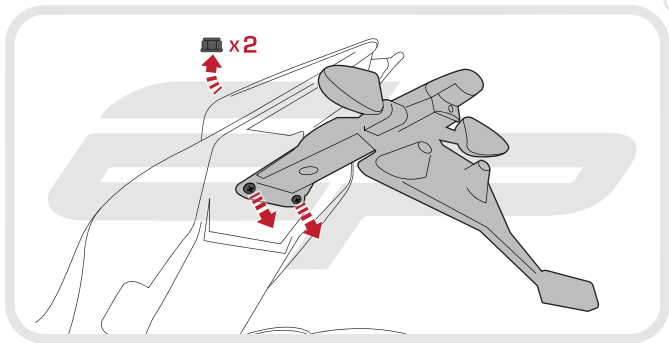
- |   |  |
|---|--|
| <b>A</b> 1 x Main Tail Tidy             | <b>H</b> 1 x 9.5mm ID Heatshrink (700mm) |
| <b>B</b> 1 x Licence Plate Bracket      | <b>I</b> 1 x 4.8mm ID Heatshrink (350mm) |
| <b>C</b> 1 x LED Licence Plate Light    | <b>J</b> 2 x Plastic Screws and Nuts     |
| <b>D</b> 1 x M6 Flange Nut              | <b>K</b> 2 x Pair Bullet Connectors      |
| <b>E</b> 1 x M6 - 30 Socket Button Head | <b>L</b> 3 x M6 Black Washers            |
| <b>F</b> 1 x Reflector Bracket          | <b>M</b> 4 x M6 - 20 Socket Button Heads |
| <b>G</b> 1 x Reflector                  | <b>N</b> 5 x Cable Ties                  |

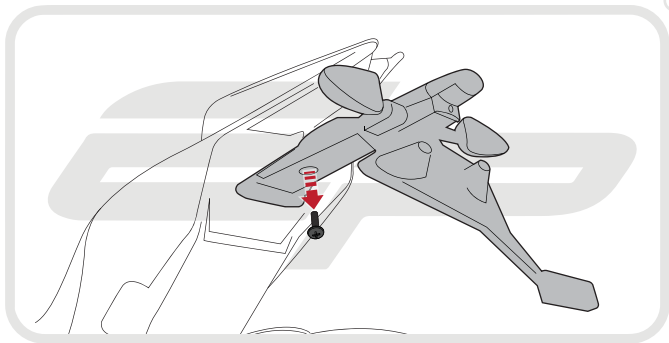




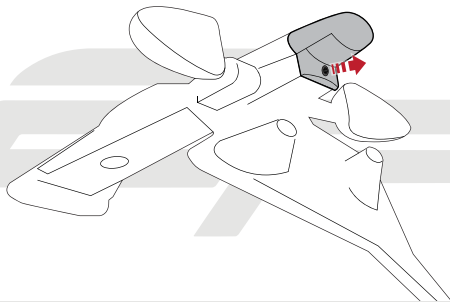


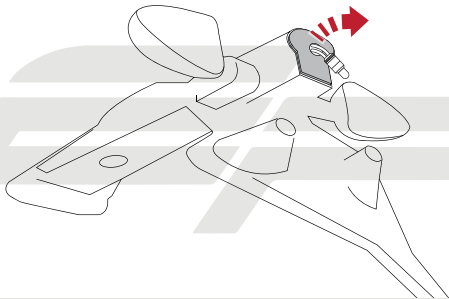


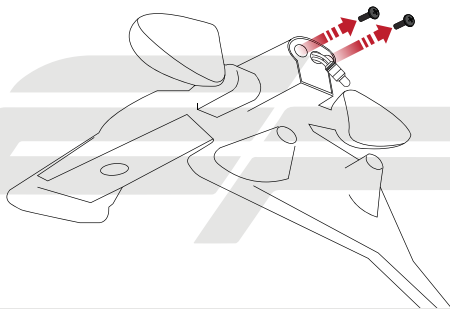


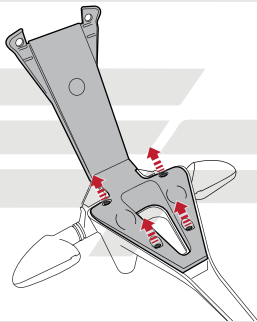


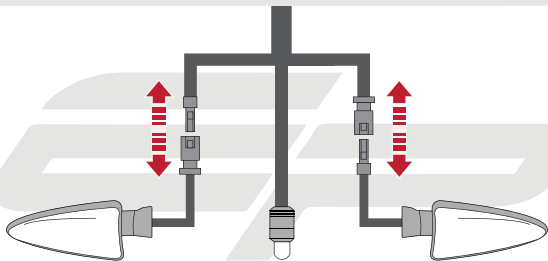


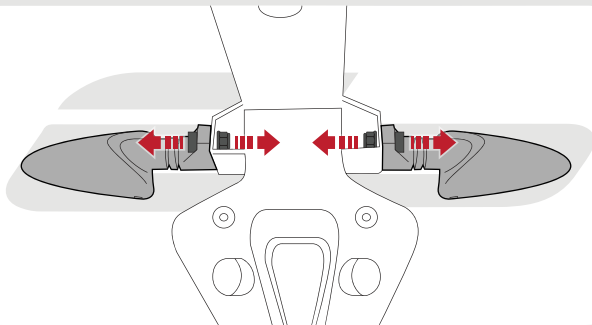






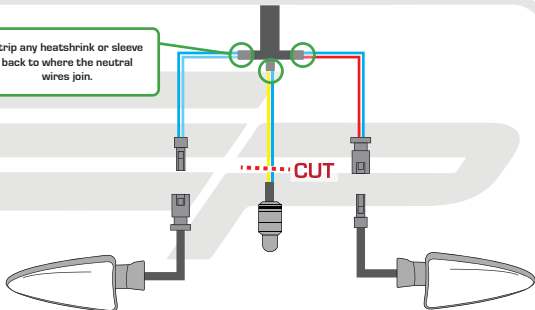








Strip any heatshrink or sleeve back to where the neutral wires join.





Caution

Add larger size Heatshrink  
to both indicator wires.



Caution

Add smaller size Heatshrink  
to plate light wires before  
adding bullet connectors

H

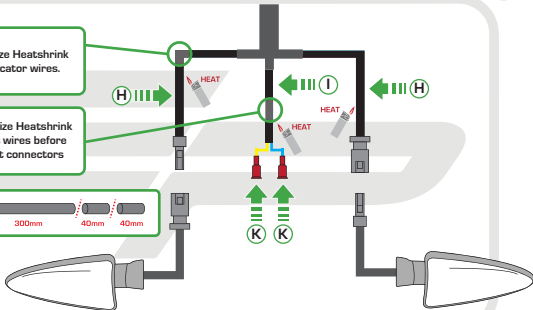


300mm

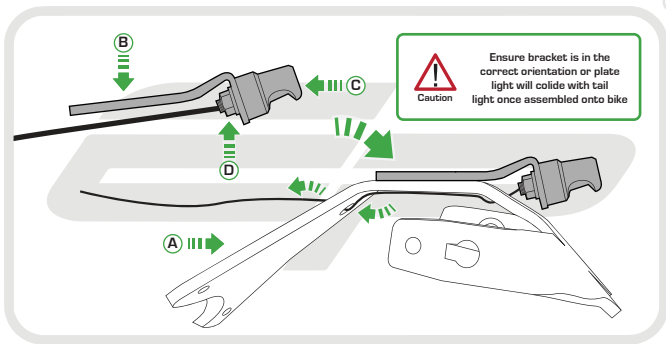
300mm

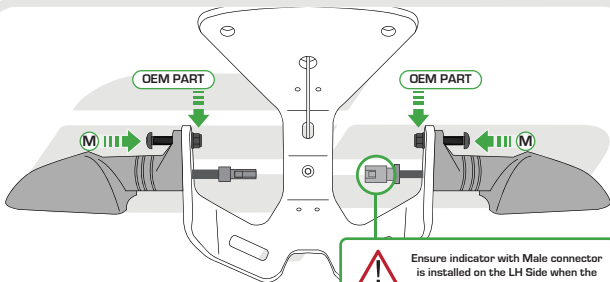
40mm

40mm



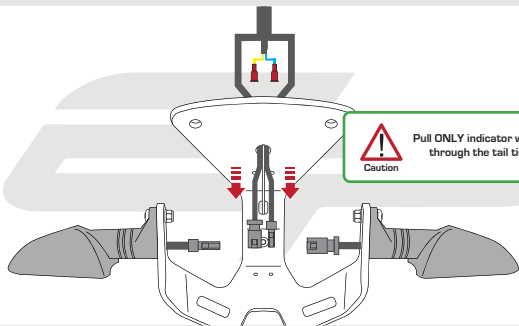


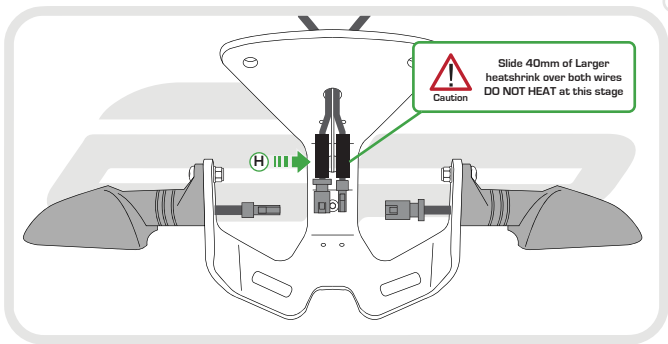


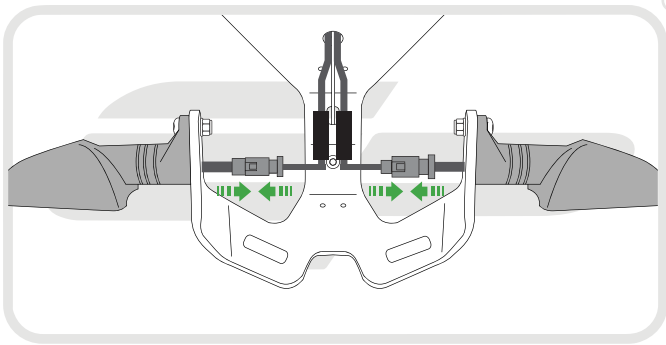


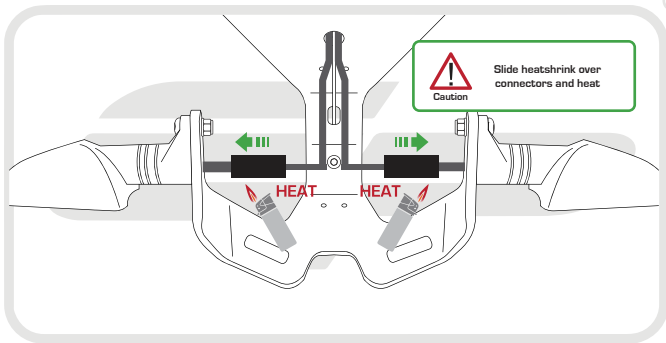
Caution

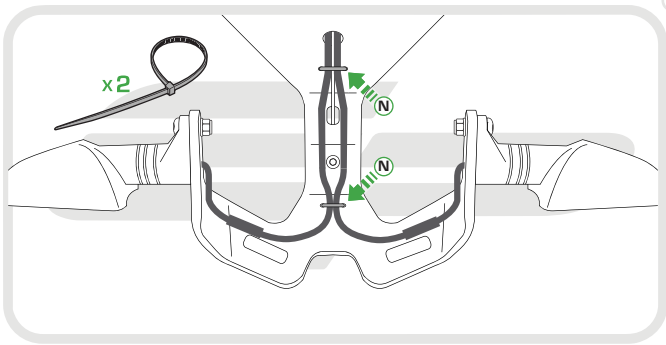
Ensure indicator with Male connector  
is installed on the LH Side when the  
tail tidy is offered up to the bike

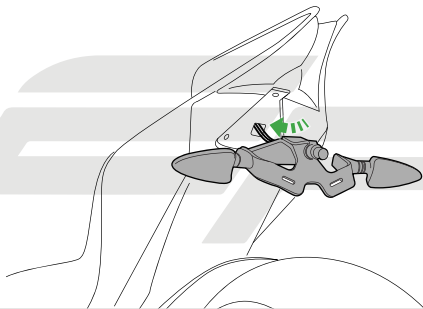




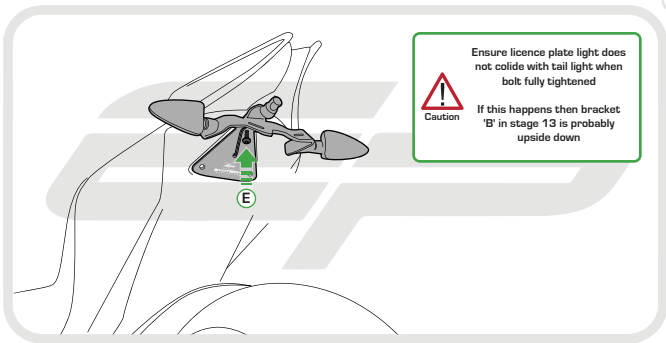








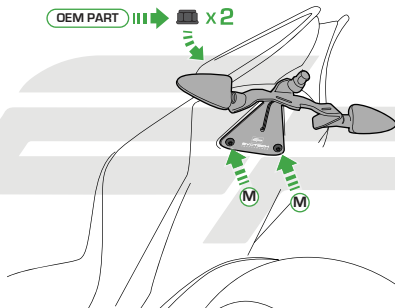


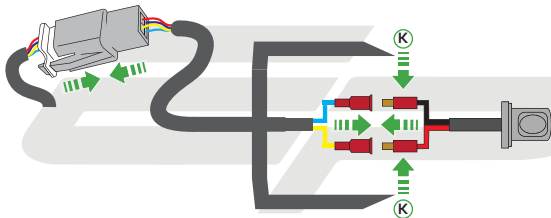


Caution

Ensure licence plate light does not collide with tail light when bolt fully tightened

If this happens then bracket 'B' in stage 13 is probably upside down



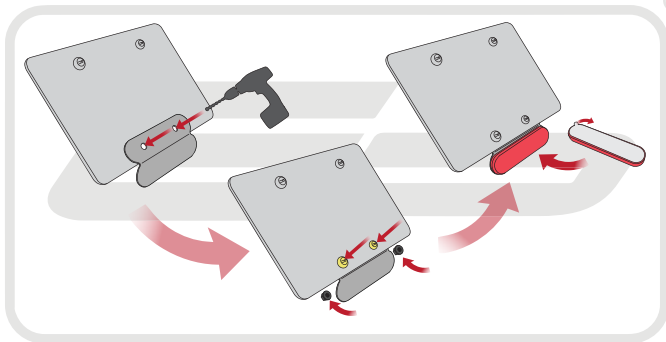




Reverse Stages

2, 1

## Reflector Bracket Installation



**EVOTECH**<sup>®</sup>  
P E R F O R M A N C E



### ESSENTIAL CHECKS



After installation of your tail tidy ensure that the licence plate does not contact the rear tyre when suspension is fully compressed.

Ensure all electrics including indicators, tail light, brake light and licence plate light lights are working correctly before riding the motorcycle.

It is recommended that periodic inspections are made to ensure that all fixings are fully tightend.



**EVOTECH**®  
P E R F O R M A N C E

[www.evotech-performance.com](http://www.evotech-performance.com)